



**DUKERS**  
Quality Commercial Refrigeration



## REACH IN REFRIGERATOR

D55AR

Top Mounted / 2-Solid Door



### **i** TECHNICAL SPECIFICATIONS

|                       |                 |
|-----------------------|-----------------|
| Voltage/Frequency     | 115V/60Hz       |
| Refrigerant           | R290            |
| Type of Defrost       | Automatic       |
| Interior Material     | Stainless Steel |
| Exterior Material     | Stainless Steel |
| Temperature Range °F  | 33 ~ 41°F       |
| Compressor Power (HP) | 1/2+            |
| Nema Config.          | NEMA5-15P       |



### PRODUCT FEATURES



The compressor is mounted in the top and placed in the coolest possible area; this makes it easily accessible for servicing.



Digital temperature controls with LED display for precise adjustment and automatic defrosting system.



Temperatures in the cabinet range from 33 to 41 degrees Fahrenheit



Self closing doors with stay open feature.



R290 Natural Refrigerant promotes faster cool down and efficient energy consumption.



Epoxy coated wire shelves.



Stainless steel interior & exterior, sealed interior floors, and rounded cabinet corners for easy cleaning.



High quality coated stainless adjustable shelves prevent peel and rust.



Lifetime warranty on hinges.



Adjustable front locking casters.

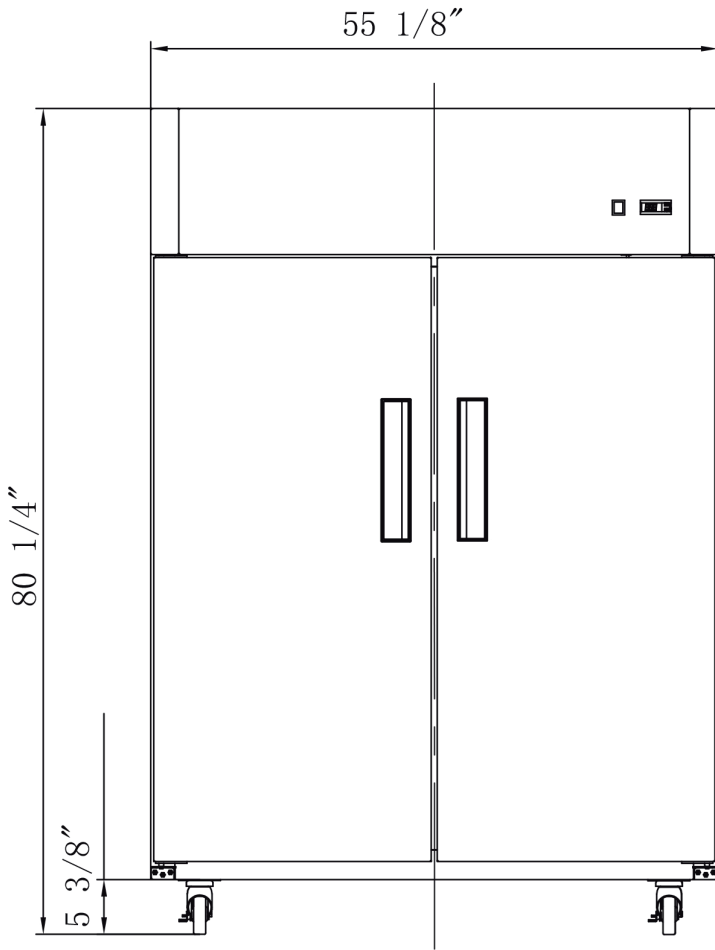


**HIGH QUALITY  
STAINLESS STEEL &  
ROBUST DESIGN**

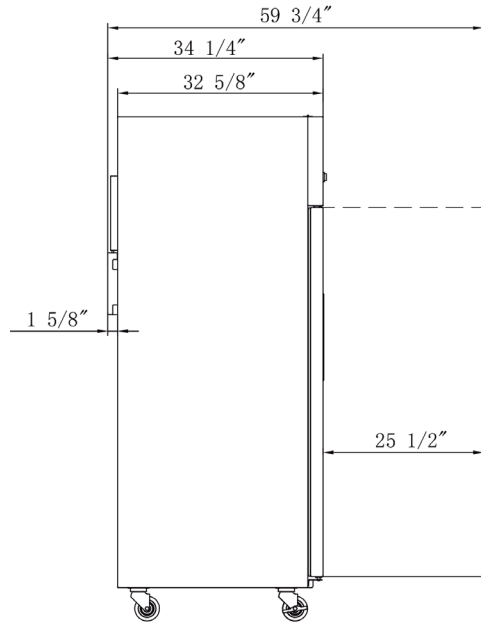
# DETAILS & SPECIFICATIONS

## D55AR

Front View



Side View



### MODEL D55AR

|                           |              |
|---------------------------|--------------|
| Rated Voltage             | 115V         |
| Rated Frequency           | 60Hz         |
| Total Input Power         | 730W         |
| Total Current             | 8.6A         |
| Total Capacity            | 41.73 cu ft  |
| Climatic Category         | 4-5          |
| Protection Type           | I            |
| Design Pressure High Side | 300 PSIG     |
| Design Pressure Low Side  | 150 PSIG     |
| Insulation Blowing Gas    | C-Pentane    |
| Refrigerant               | R290/4.58 oz |

| MODEL | EXTERNAL DIMENSION<br>WXDXH (INCHES) | PACKAGING DIMENSION<br>WXDXH (INCHES) | PRODUCT NET<br>WEIGHT | # OF<br>SHELVES | 40HQ<br>CONTAINER CERT. |
|-------|--------------------------------------|---------------------------------------|-----------------------|-----------------|-------------------------|
| D55AR | 55 1/8 x 34 1/4 x 80 1/4             | 57 1/8 x 35 1/4 x 82 1/4              | 463 lbs               | 8               | 16                      |

